



MONTICELLO COMMUNITY SCHOOL DISTRICT

NEW ELEMENTARY SCHOOL

School Board Meeting
July 28, 2025

PROCESS



PLANNING

- Define space requirements
- Identify programmatic adjacencies
- Project Vision
- Visual Benchmarking

SCHEMATIC DESIGN

- Initial building footprint
- Exterior material selection
- Understanding of 3D massing
- Initial floor plan development

DESIGN DEVELOPMENT

- Refinement of floor plan
- Building systems integration
- Interior material selection
- Technical drawing set begins

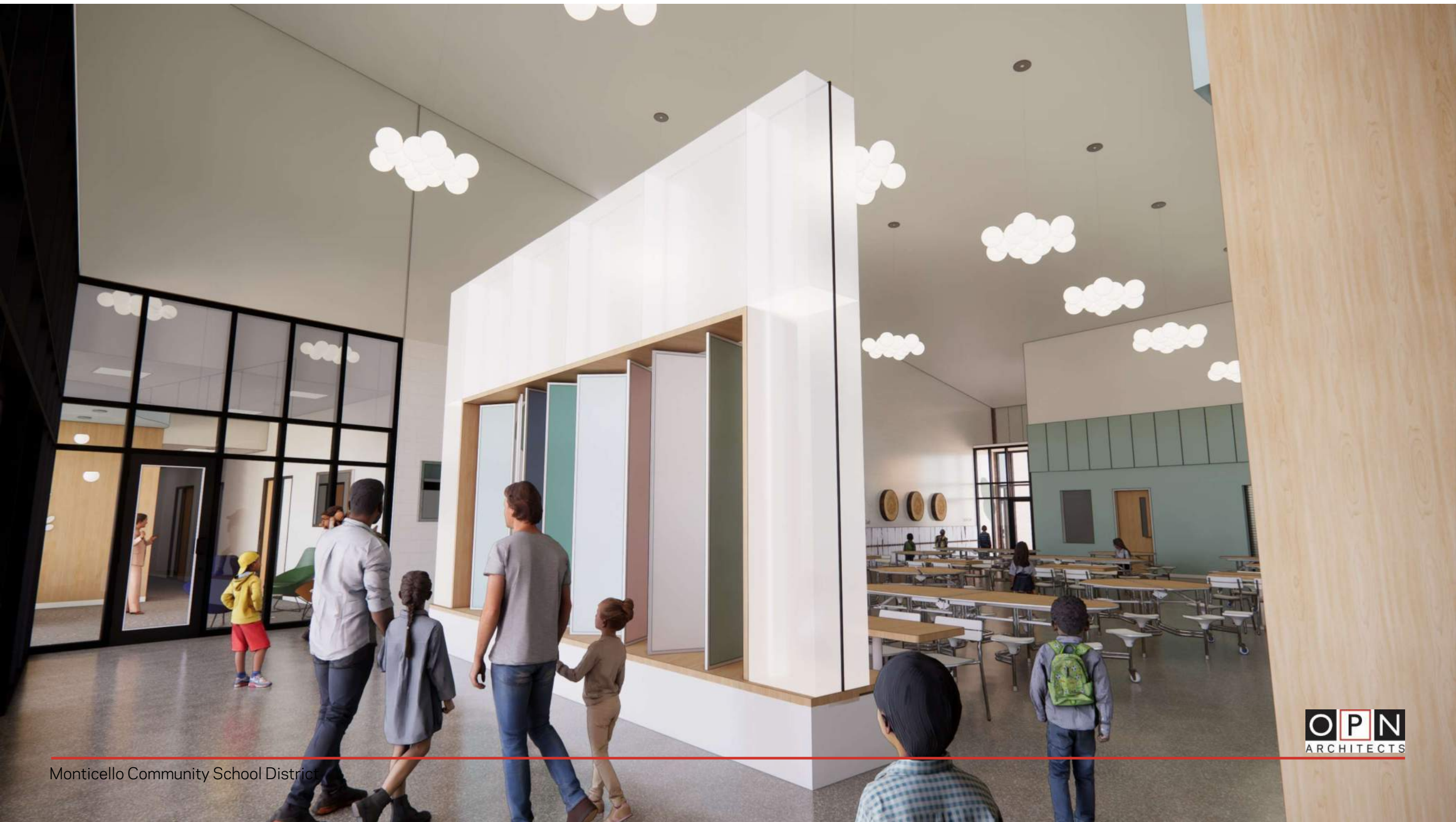
CONSTRUCTION DOCUMENTS

- Finalize building equipment
- Prepare construction documents for bidding

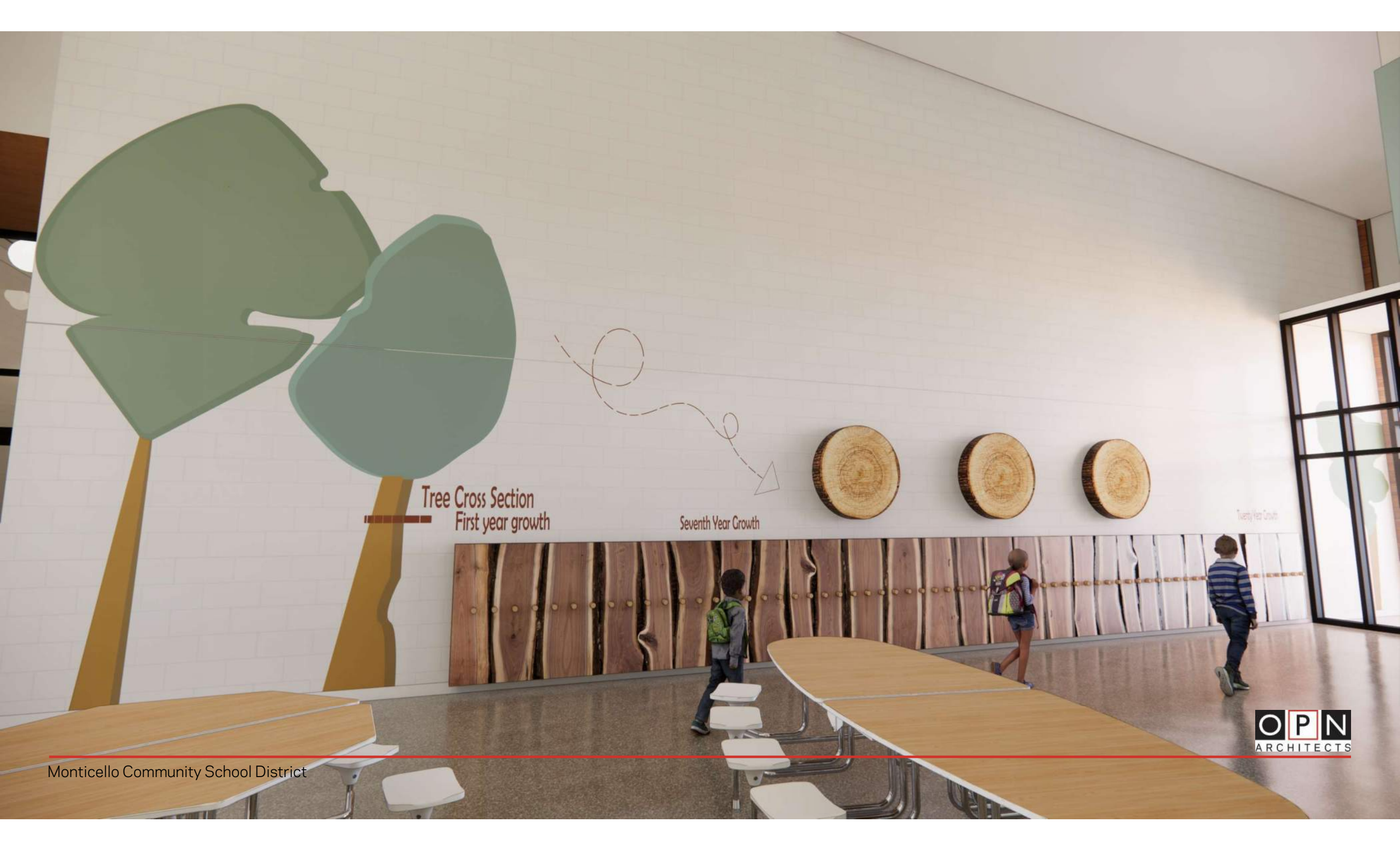


DESIGN UPDATE IMAGES







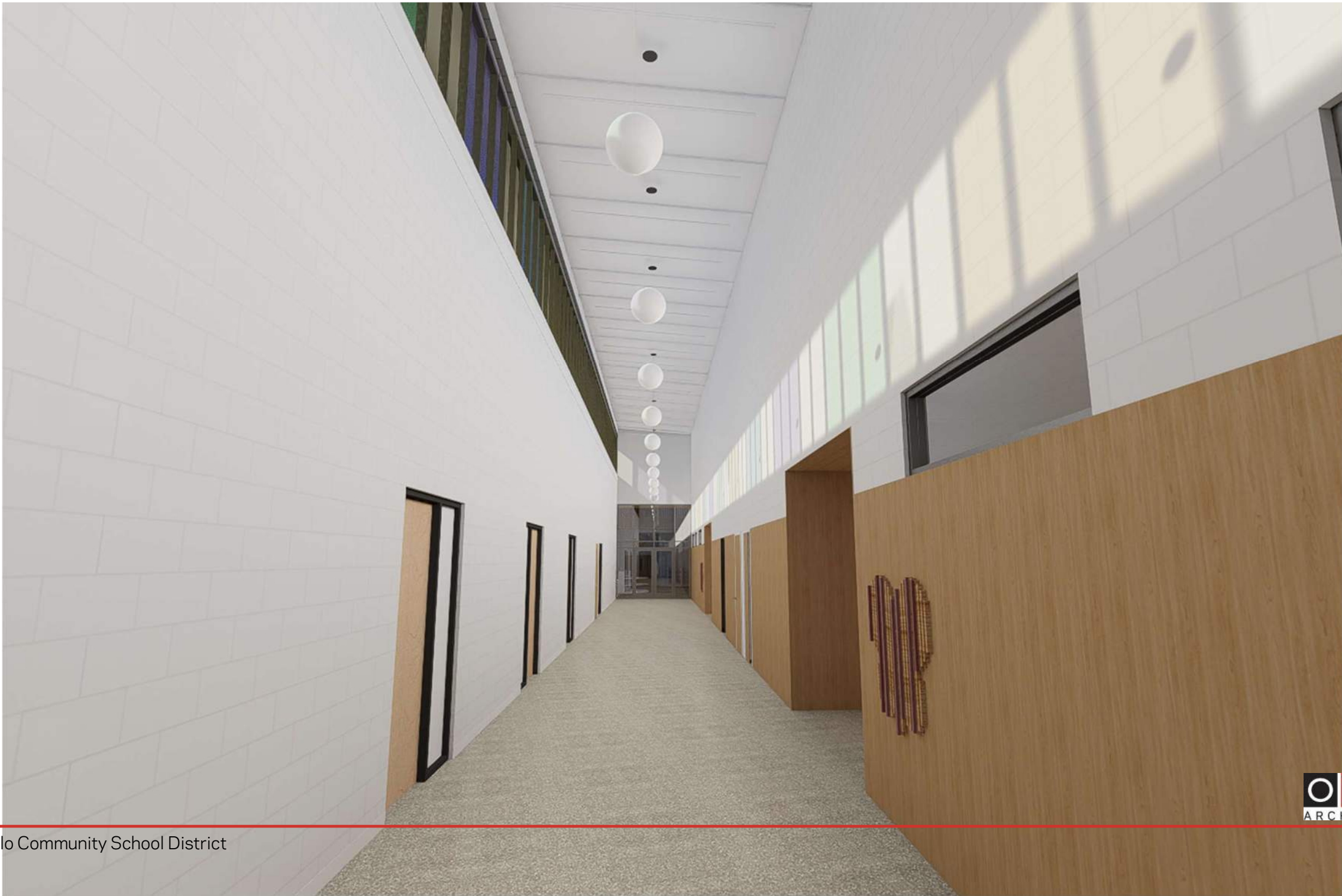


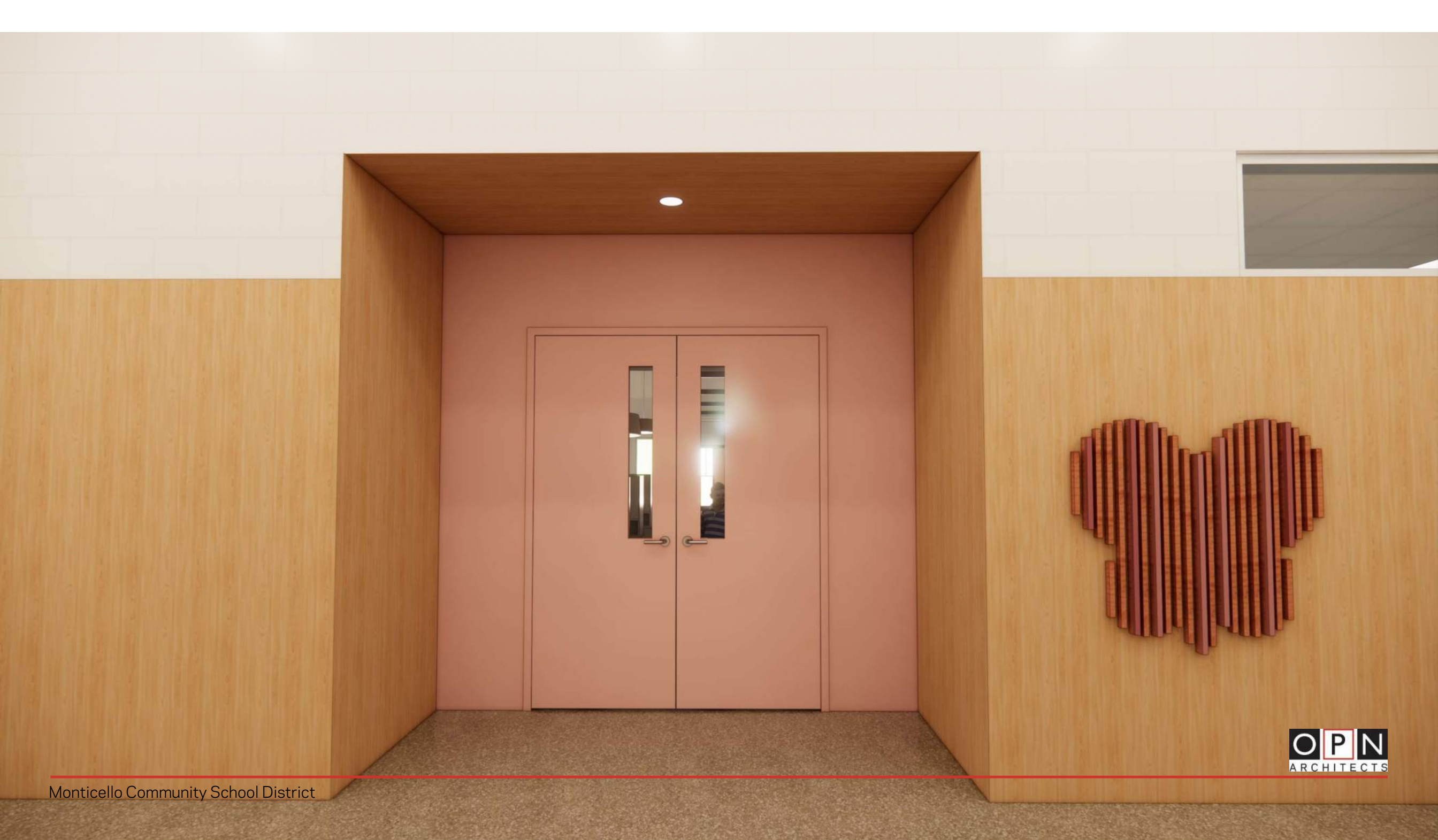
Tree Cross Section
First year growth

Seventh Year Growth

Twenty Year Growth

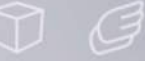


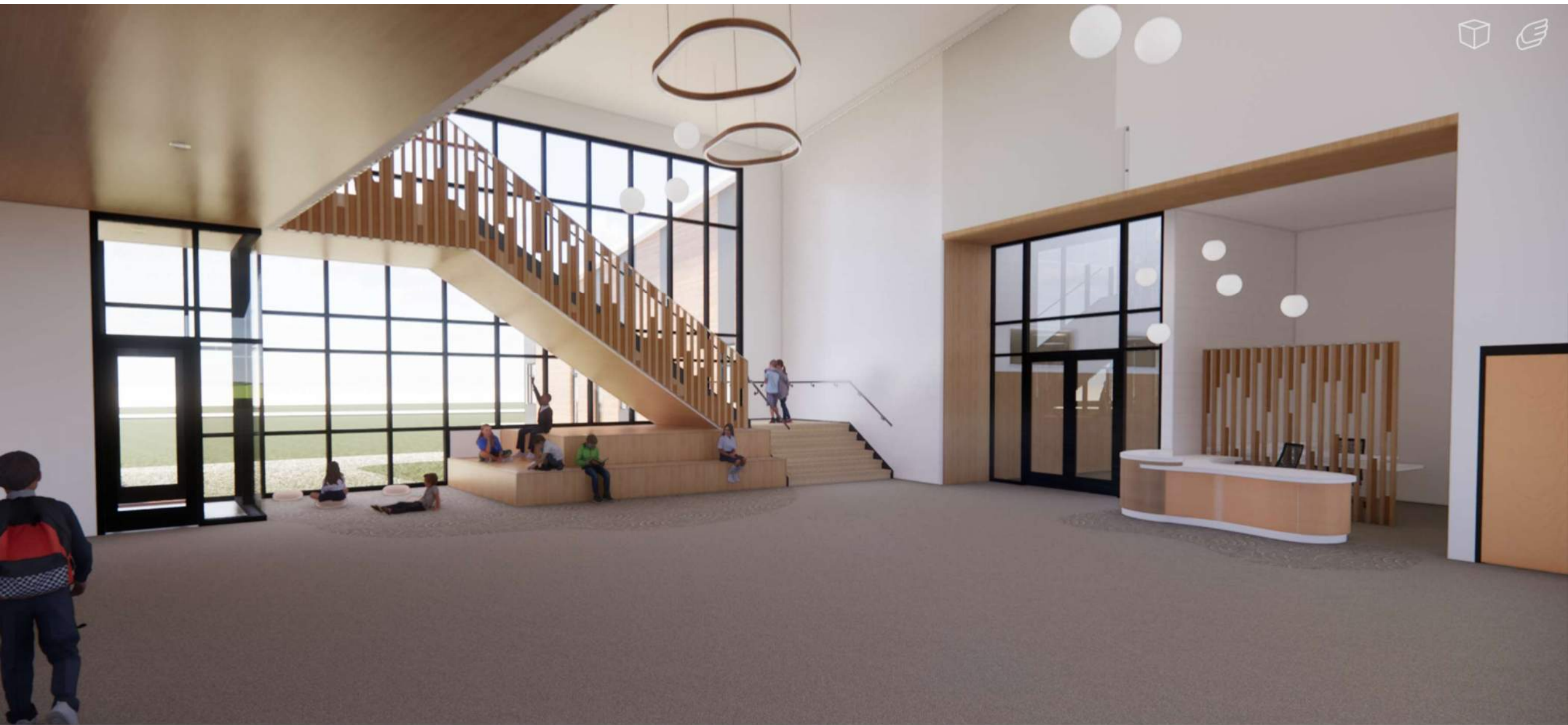










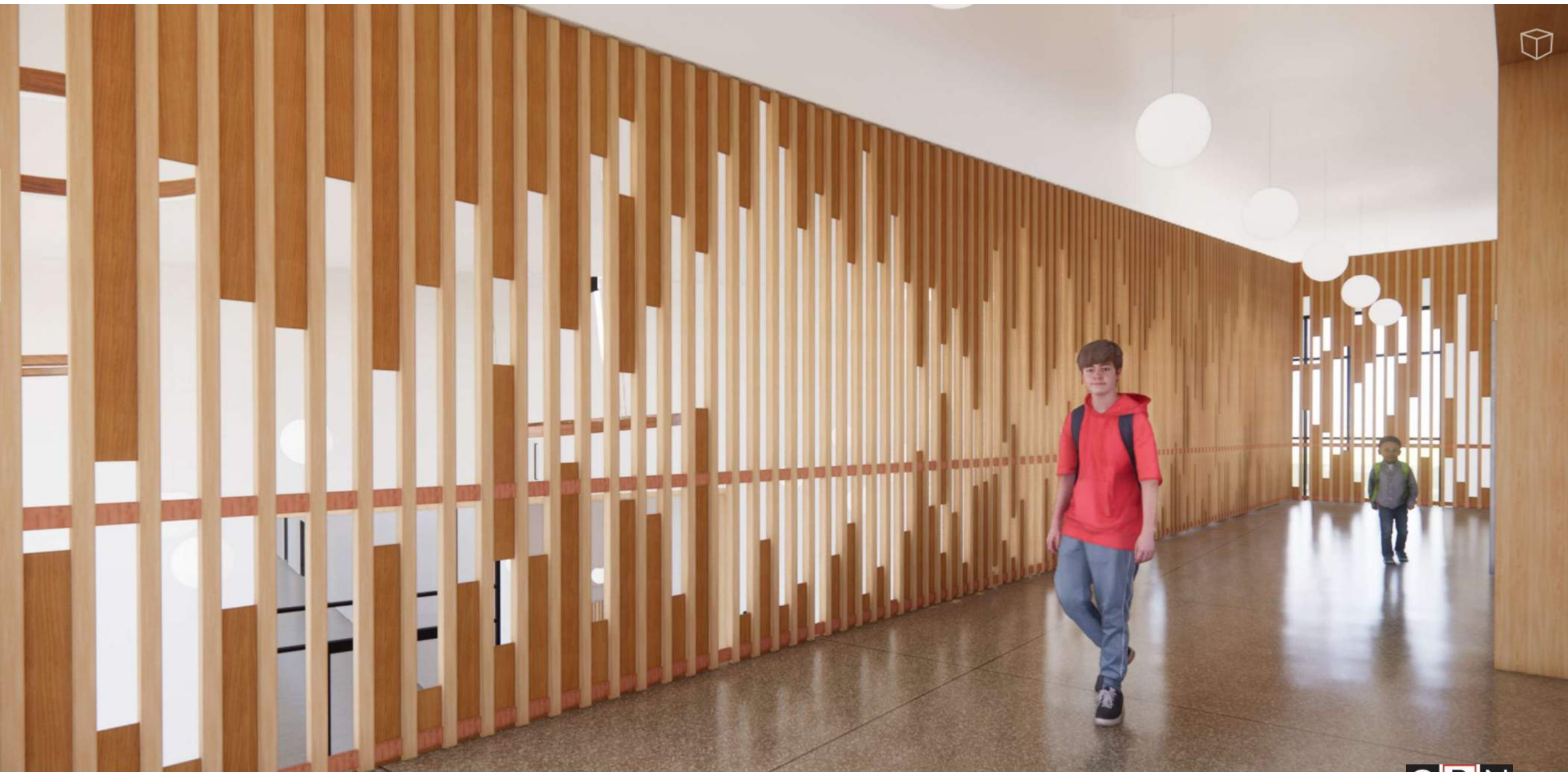






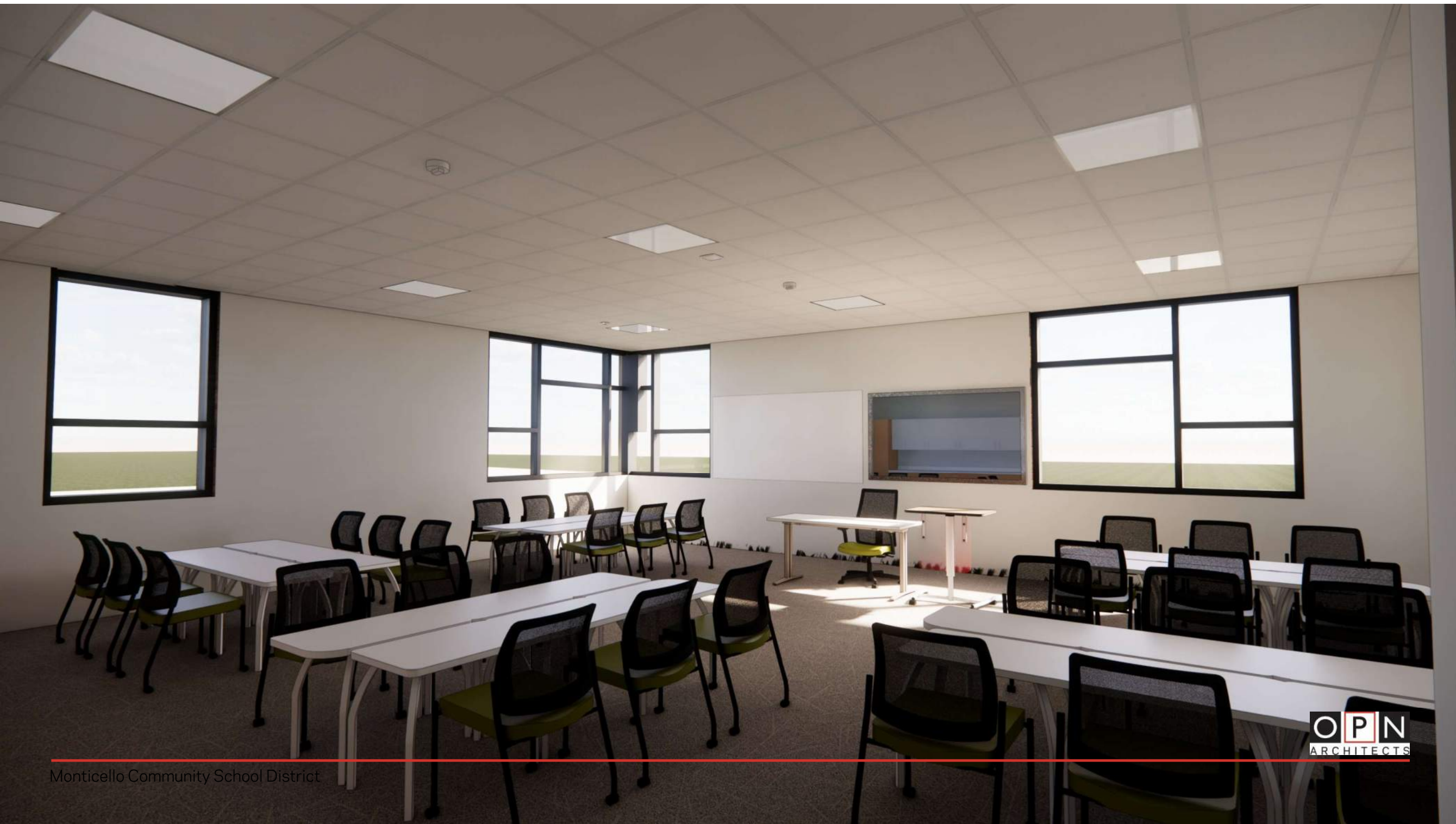




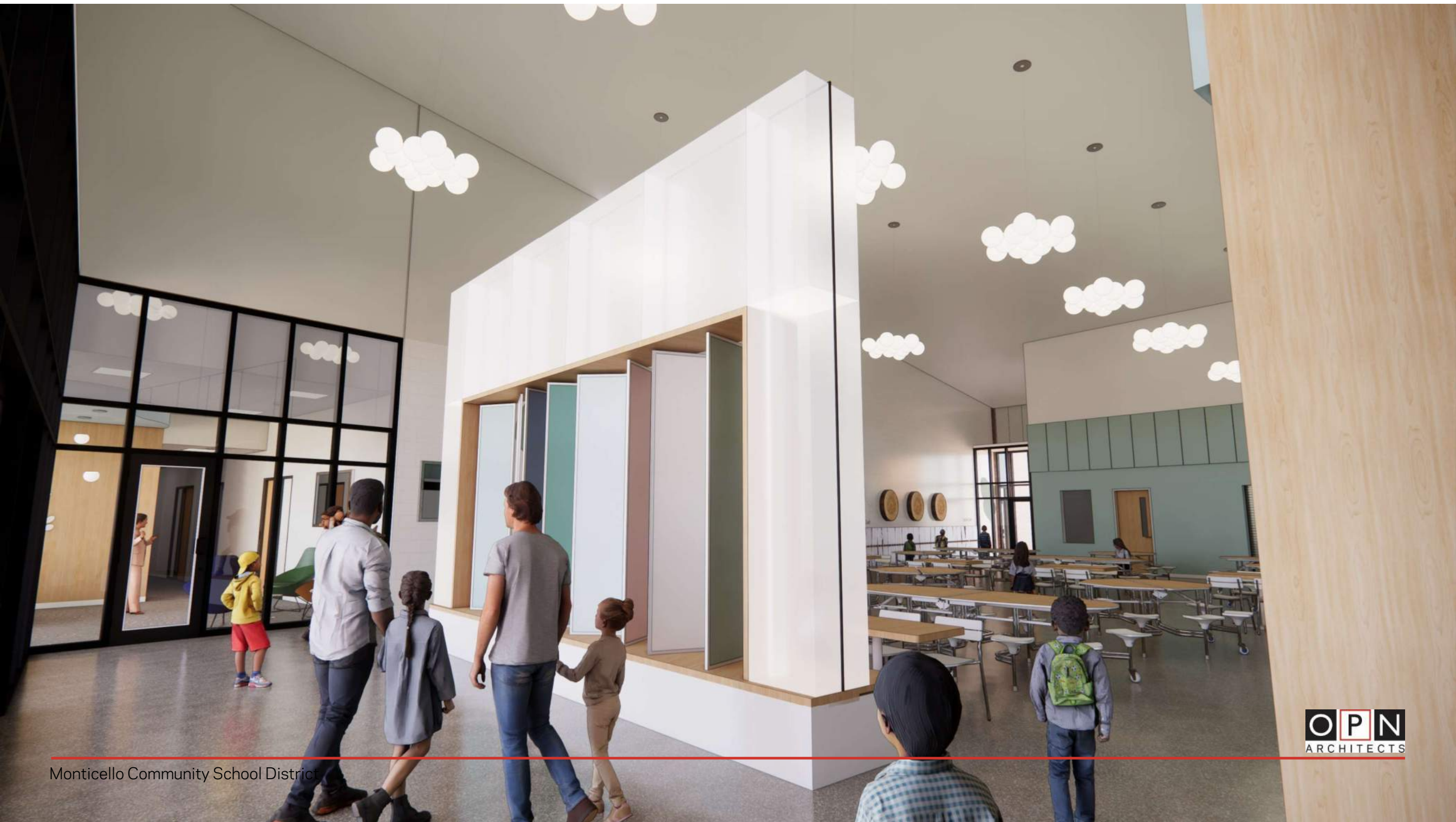




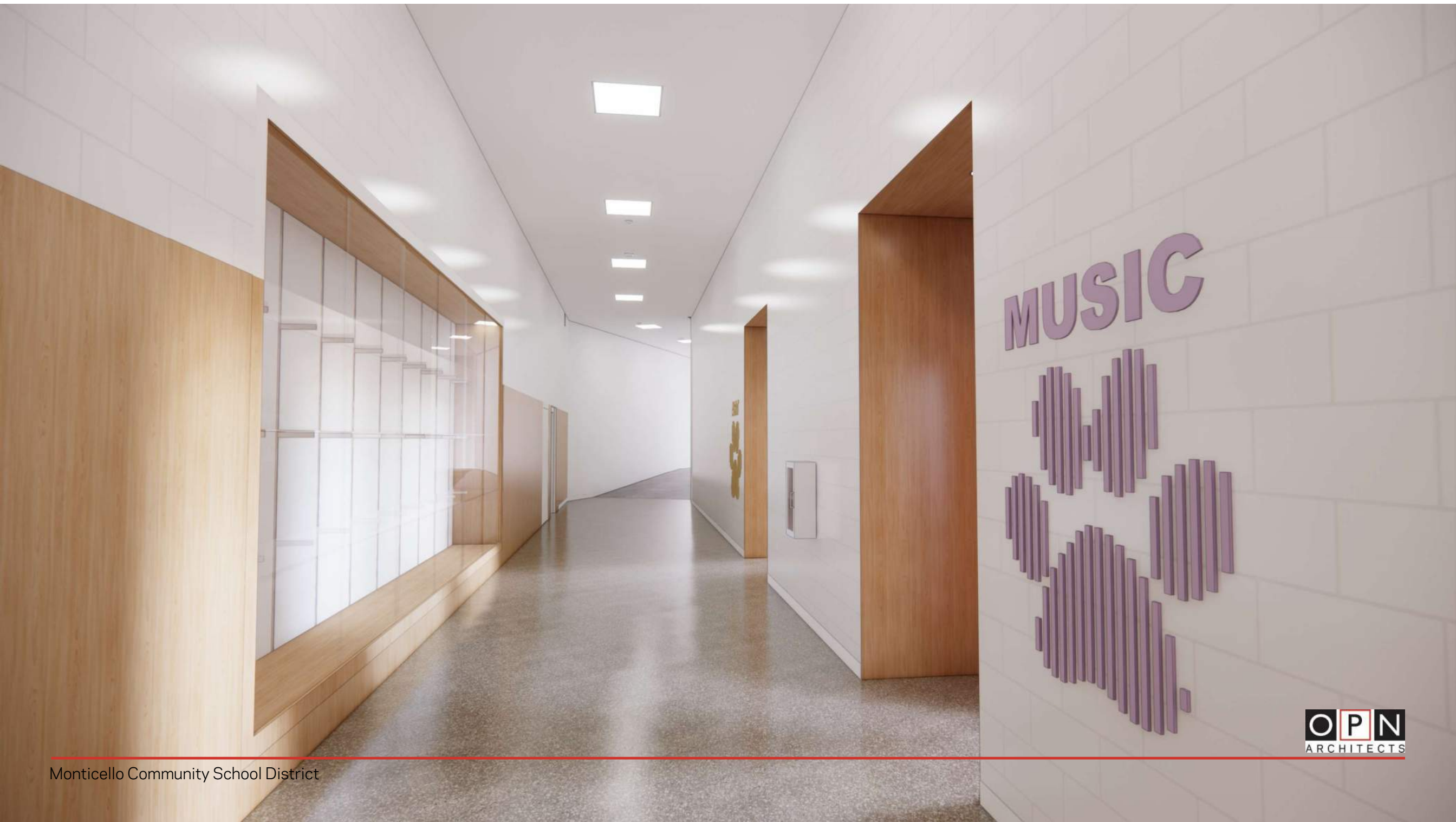


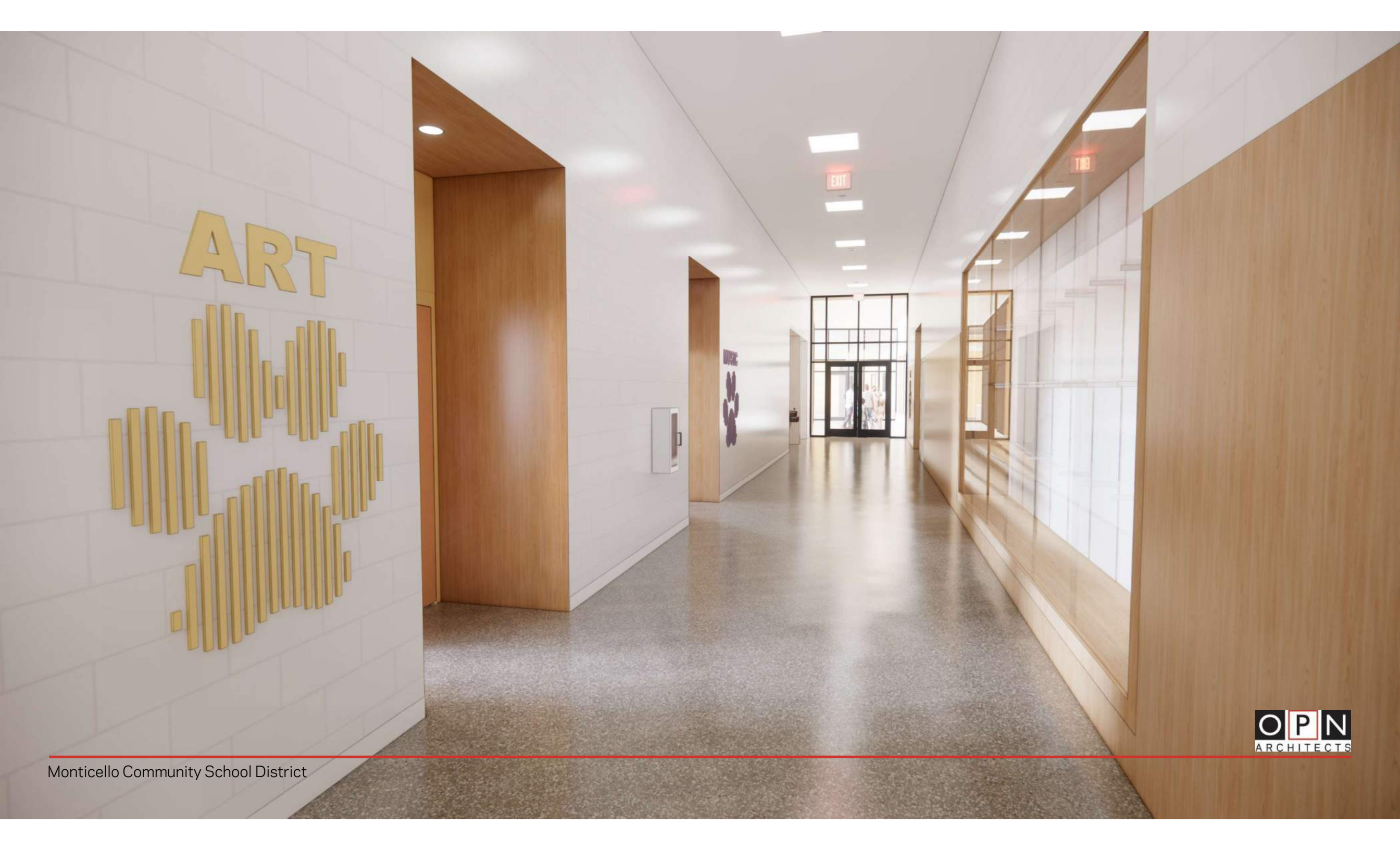




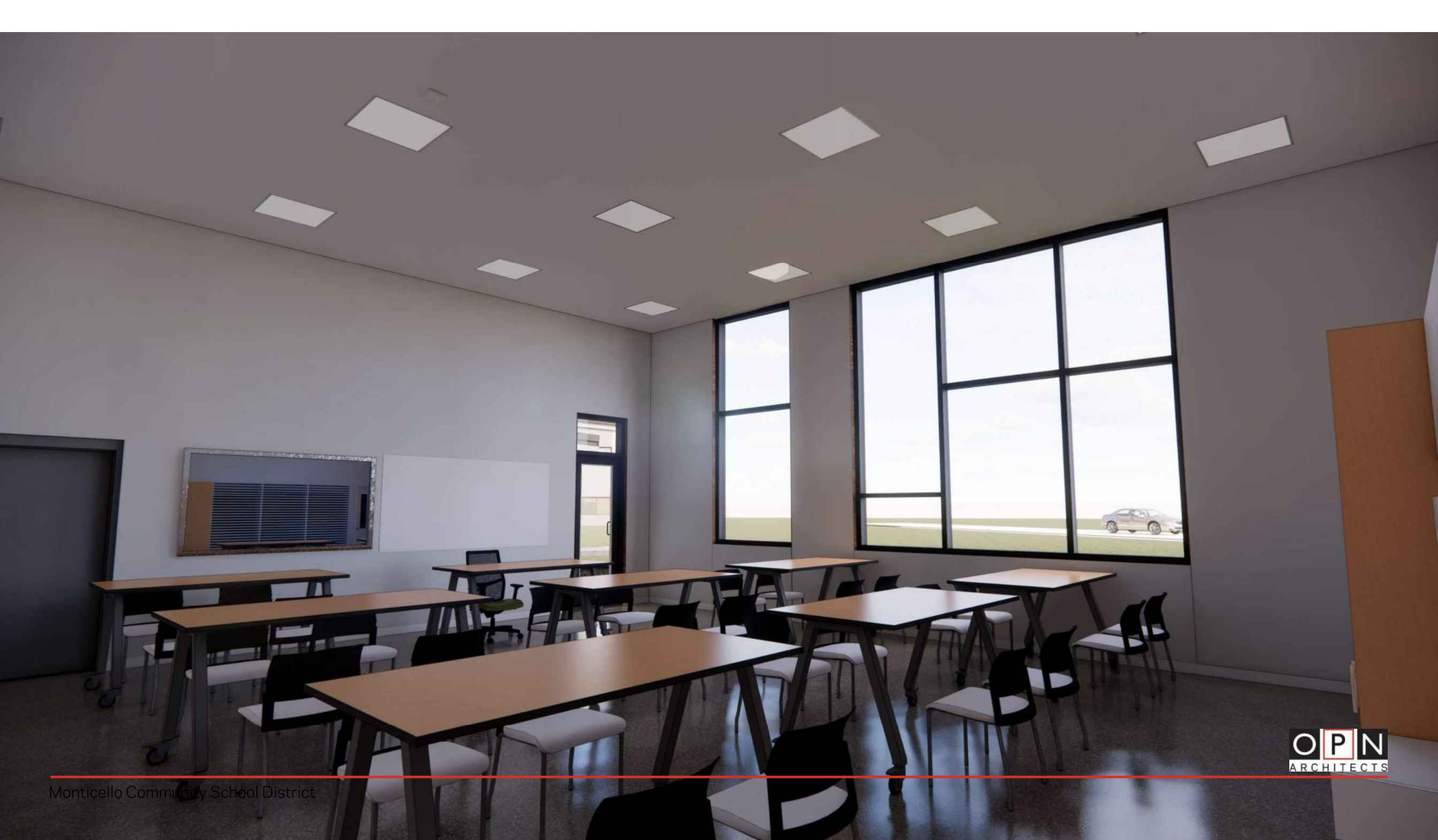








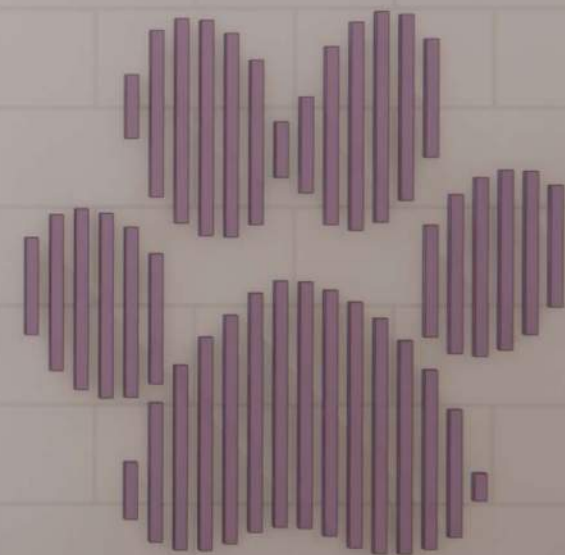




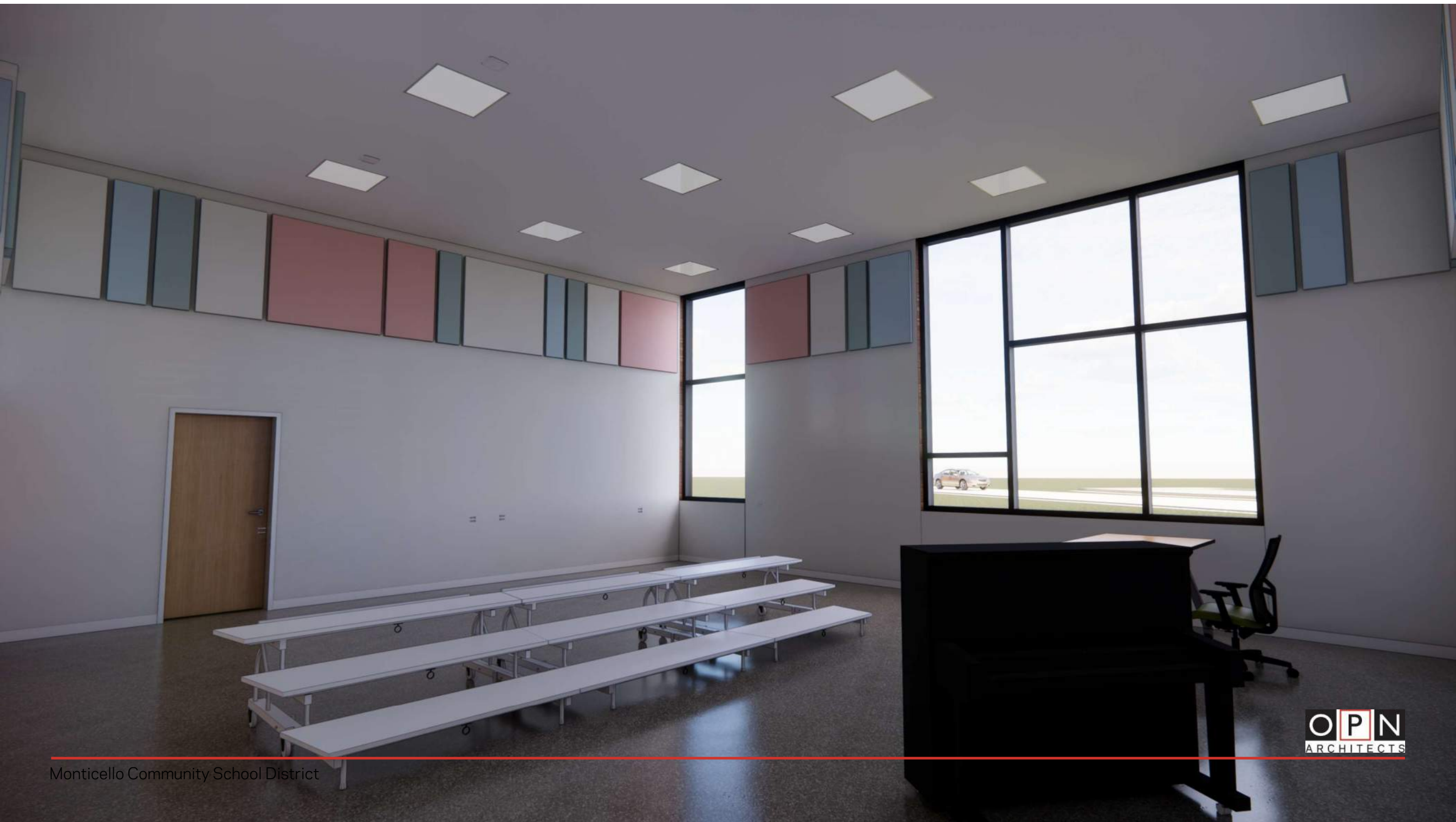


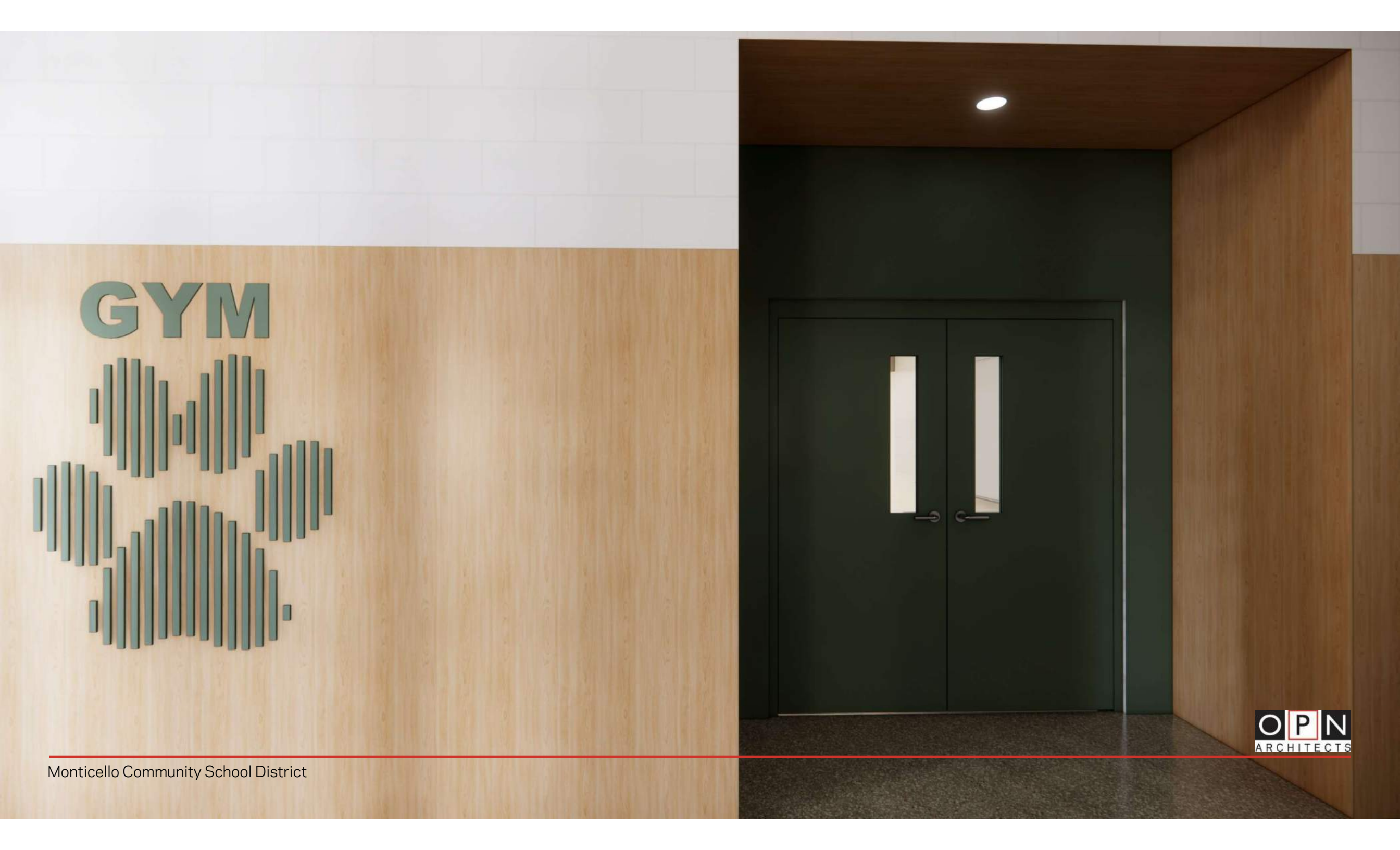


MUSIC





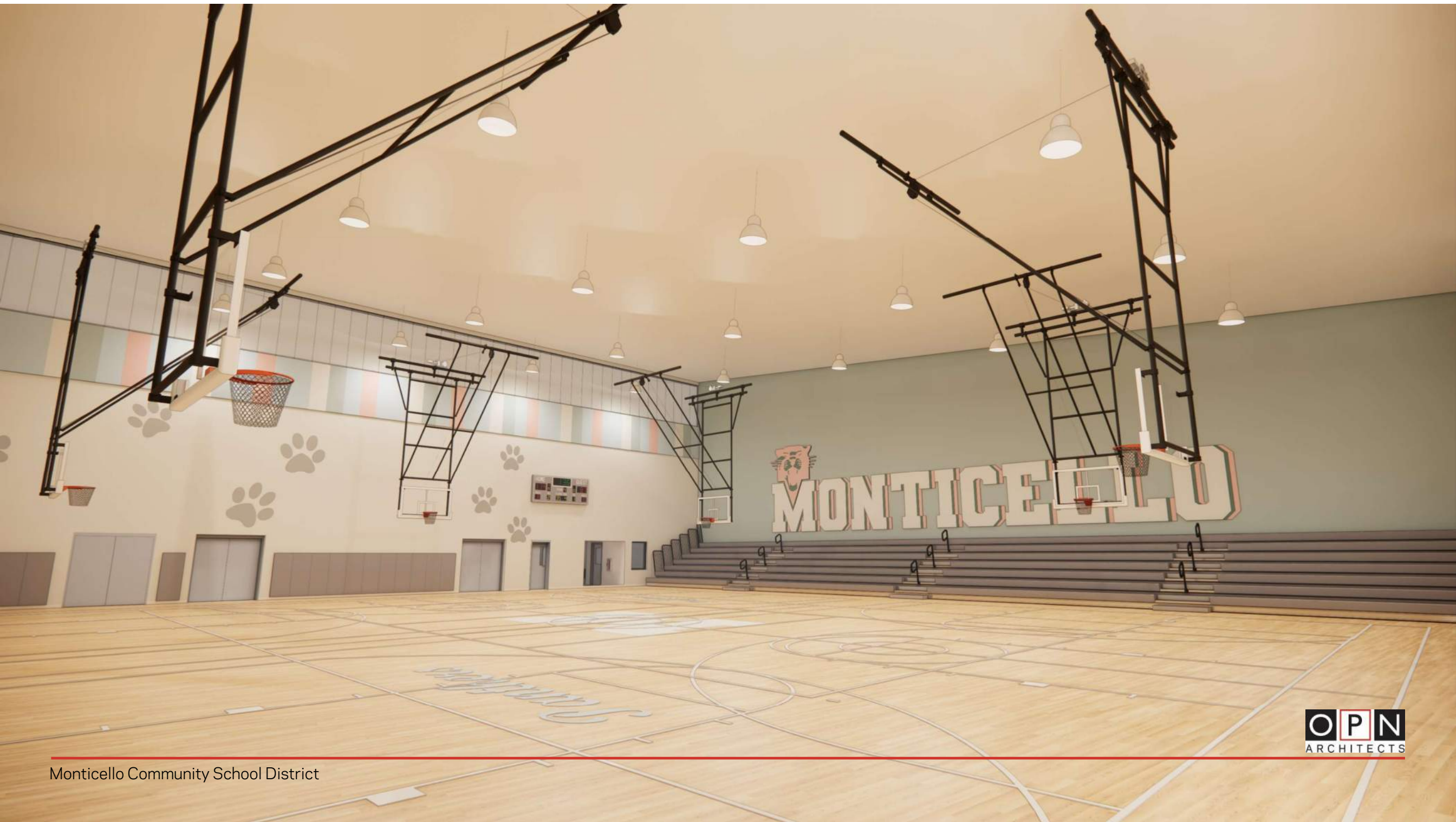




GYM









PROJECT BUDGET

PROGRAM TRACKING

ELEMENTARY SCHOOL
PRE-K – 4th
6 GRADE LEVELS

SCHEMATIC DESIGN
71,600 SF

DESIGN DEVELOPMENT
72,722 SF

CONSTRUCTION COST ESTIMATES

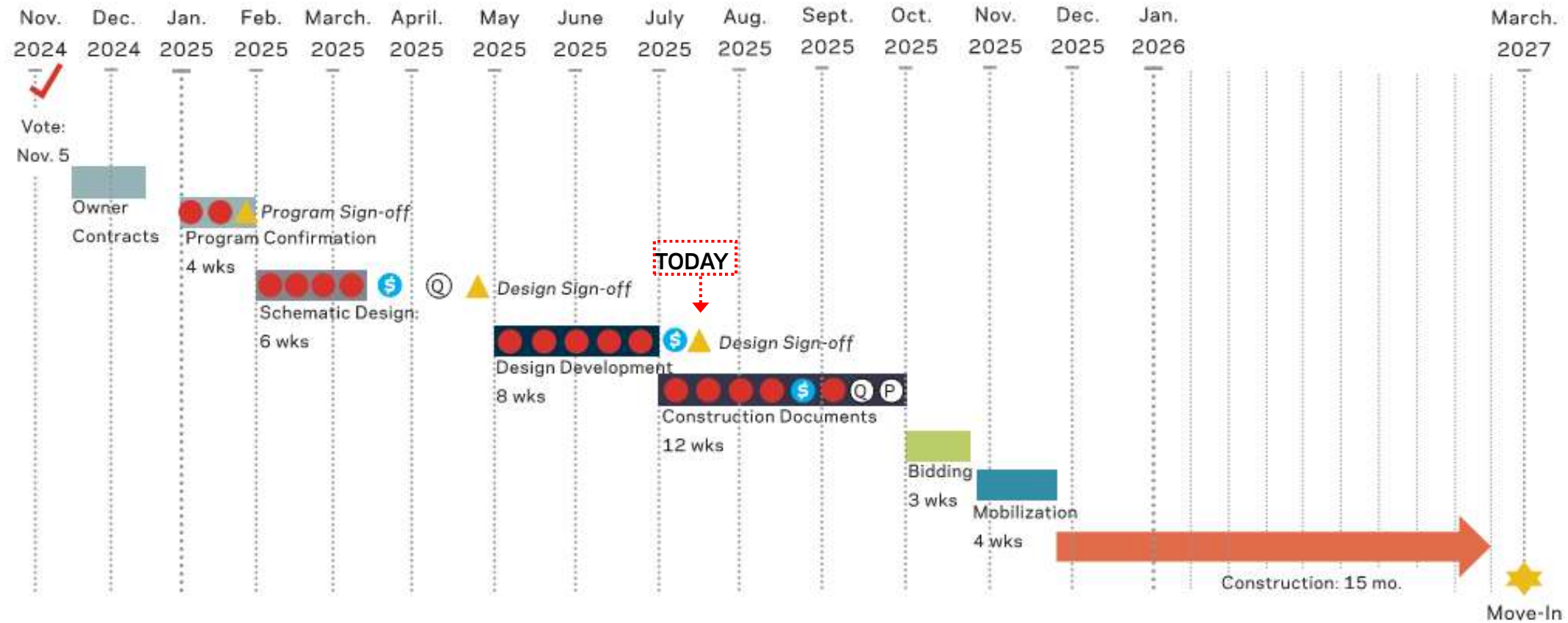
TARGET CONSTRUCTION COSTS:	\$22,300,000	\$22,300,000
CONSTRUCTION ESTIMATE:	\$23,275,860	\$23,800,000
DELTA FROM TARGET COSTS:	\$975,860	\$1,500,000
COST PER SQUARE FOOT:	\$325/SF	\$327/SF

ALTERNATE #1 DEDUCT – GYM:	N/A	\$670,560
ALTERNATE #2 ADD – PARKING LOT	N/A	\$334,872



SCHEDULE

PROJECT SCHEDULE



KEY:

Cost Evaluation

Owner Meetings

Owner Sign-off

QC/Assurance Reviews

Page-Turn Review





QUESTIONS

Thank You