



MONTICELLO COMMUNITY SCHOOL DISTRICT

NEW ELEMENTARY SCHOOL

Board Meeting
June 23, 2025

AGENDA

- EXTERIOR AND INTERIOR DESIGN
- PLAYGROUND DESIGNER
- CNC – COMMERICAL NEW CONSTRUCTION PROGRAM & ENERGY REBATE

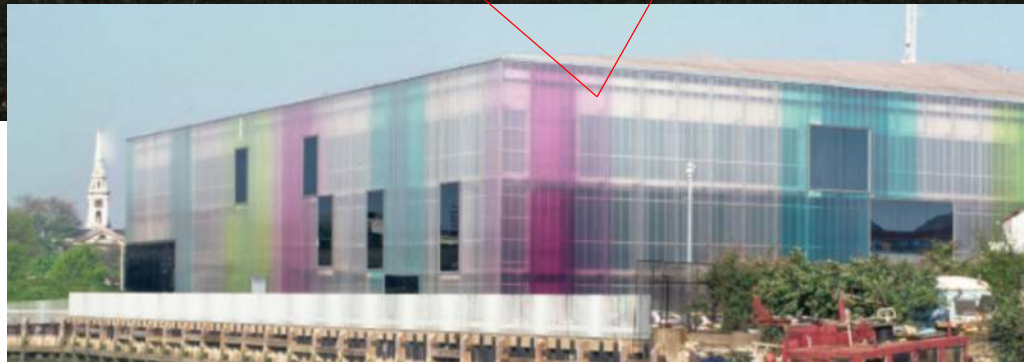


EXTERIOR & INTERIOR DESIGN

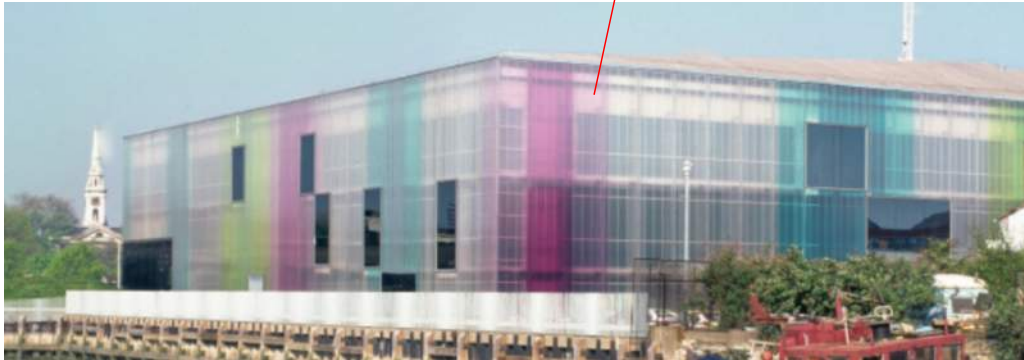
EXTERIOR



EXTERIOR



EXTERIOR



EXTERIOR



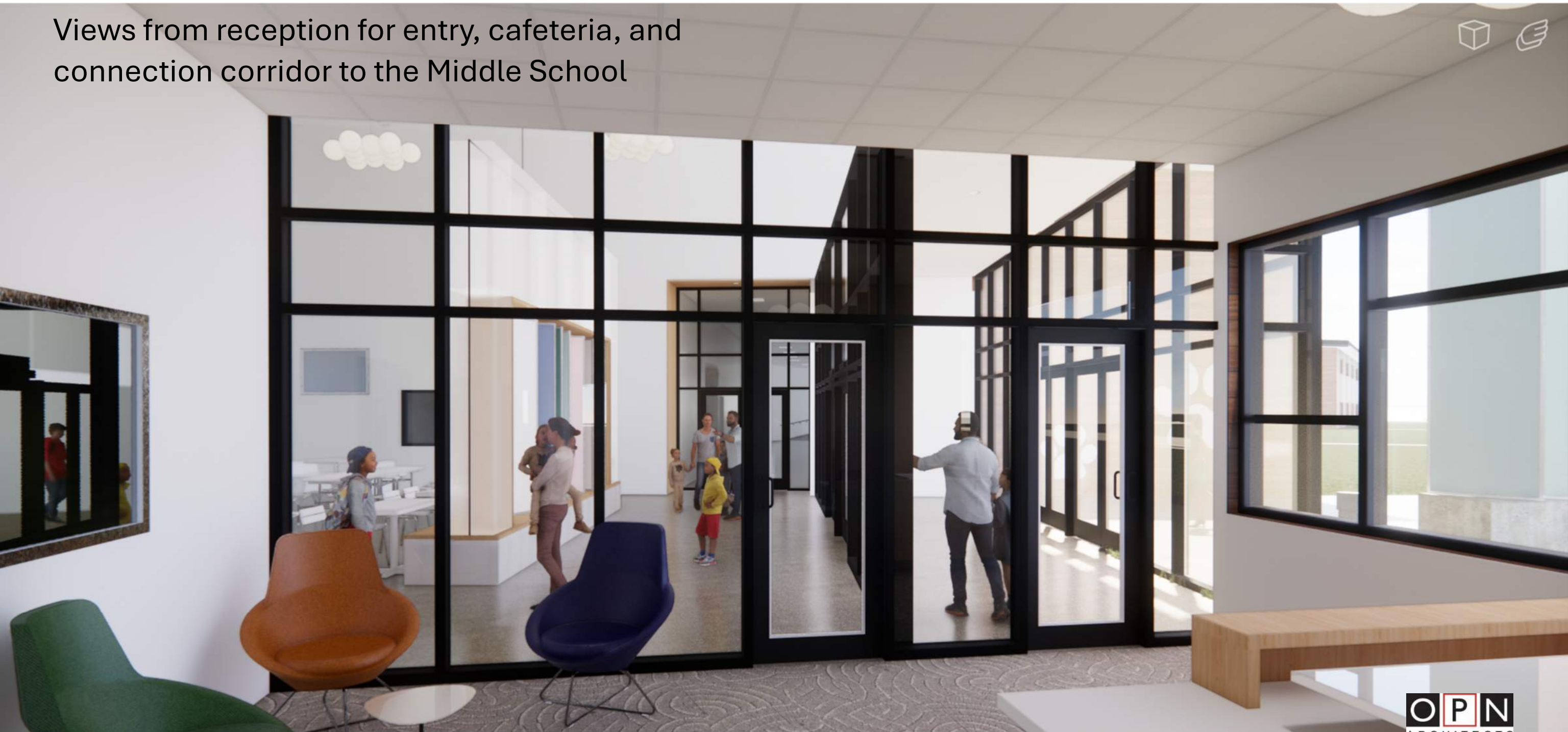
INTERIOR FINISHES



Biophilia themed interiors where elements of nature are incorporated into the school environment to enhance student and teacher well-being and learning.

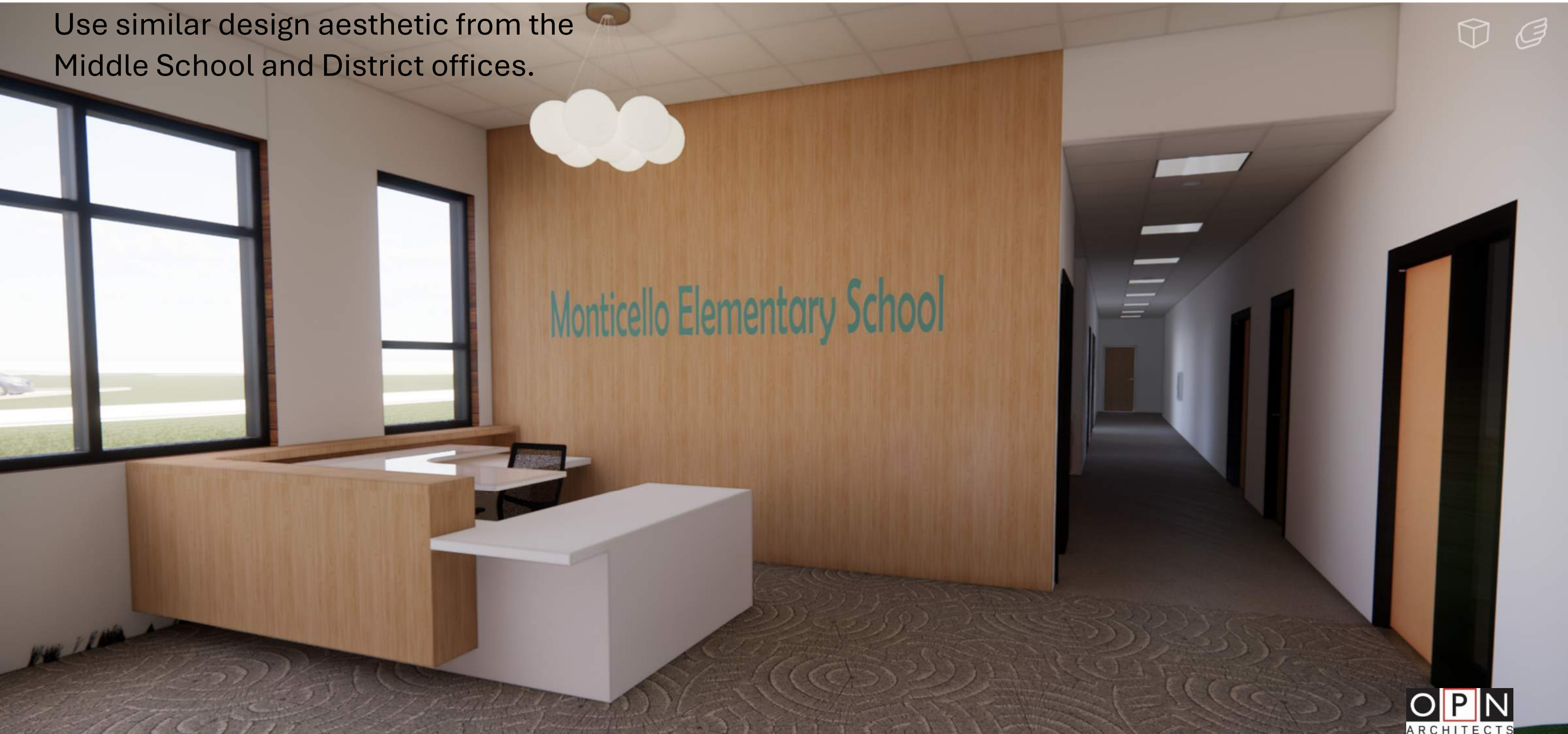
ENTRY & CAFETERIA

Views from reception for entry, cafeteria, and connection corridor to the Middle School



ENTRY & CAFETERIA

Use similar design aesthetic from the Middle School and District offices.



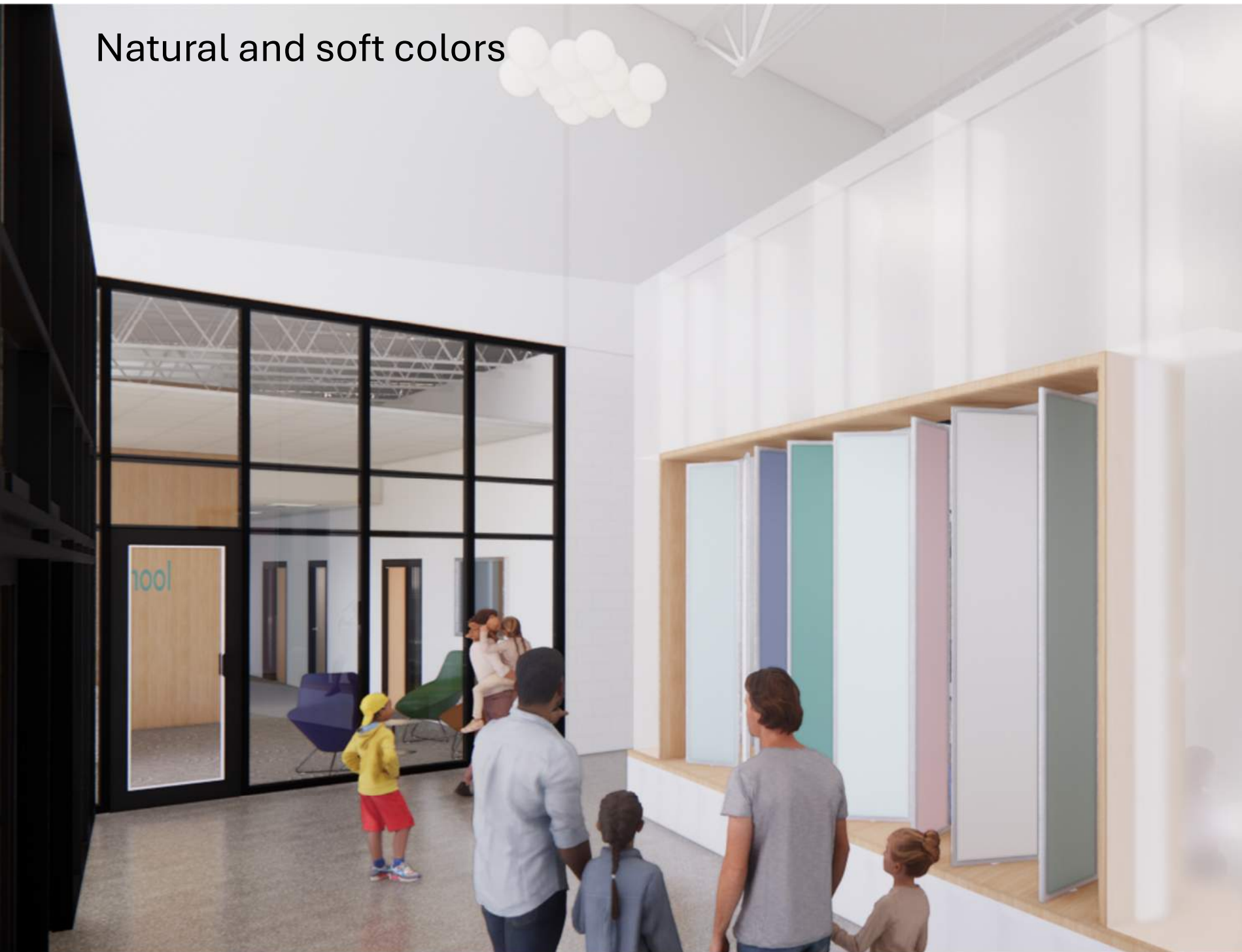
ENTRY & CAFETERIA

Tactile learning opportunities – physical touch and play



ENTRY & CAFETERIA

Natural and soft colors



ENTRY & CAFETERIA



Wayfinding of corridors and co-labs with wood portal walls

ENTRY & CAFETERIA

Learning wall that incorporates coat hooks



CORRIDOR TO CLASSROOMS



Wayfinding graphics and colors incorporated into the walls at entries into the co-labs

PRE-K AND KINDERGARTEN CO-LAB & CLASSROOMS

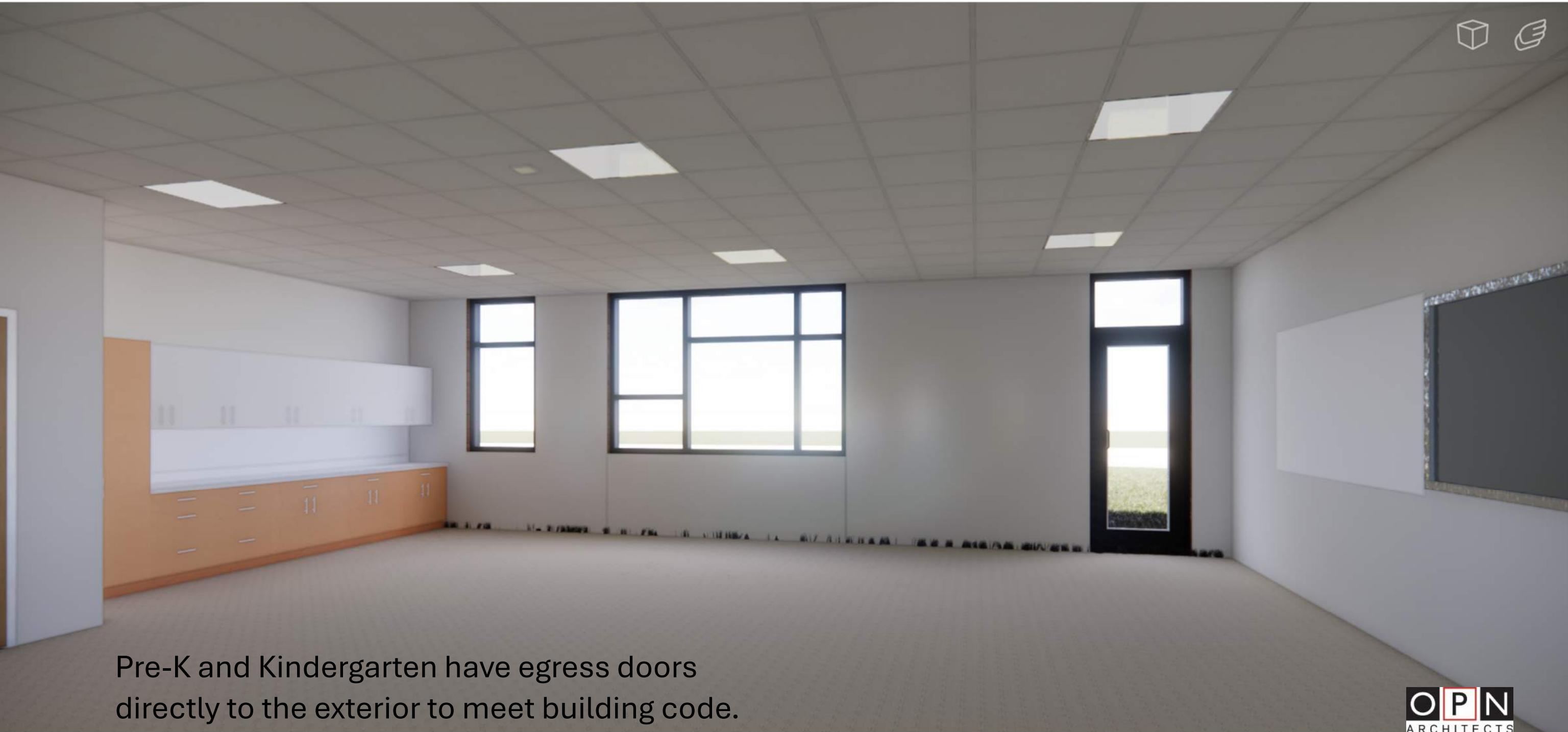


Continuing the vertical fin aesthetic into the co-labs, and different size windows to add whimsical character to the space.

PRE-K AND KINDERGARTEN CO-LAB & CLASSROOMS



PRE-K AND KINDERGARTEN CO-LAB & CLASSROOMS



Pre-K and Kindergarten have egress doors directly to the exterior to meet building code.

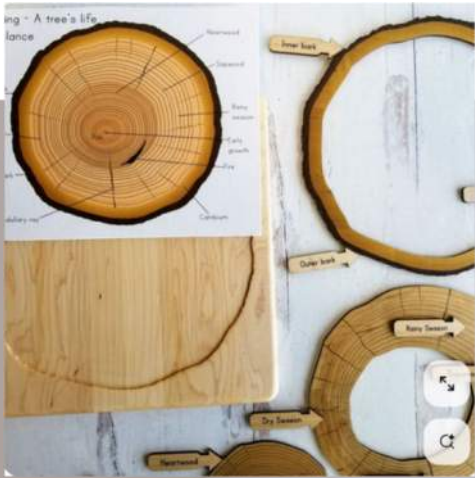
LIBRARY & TREE HOUSE STAIR



Tree house themed stair and catwalk with the use of animals to identify the co-lab spaces.

LIBRARY & TREE HOUSE STAIR

Continuing tree
them with the
light fixtures to
replicate a cut
section of a tree



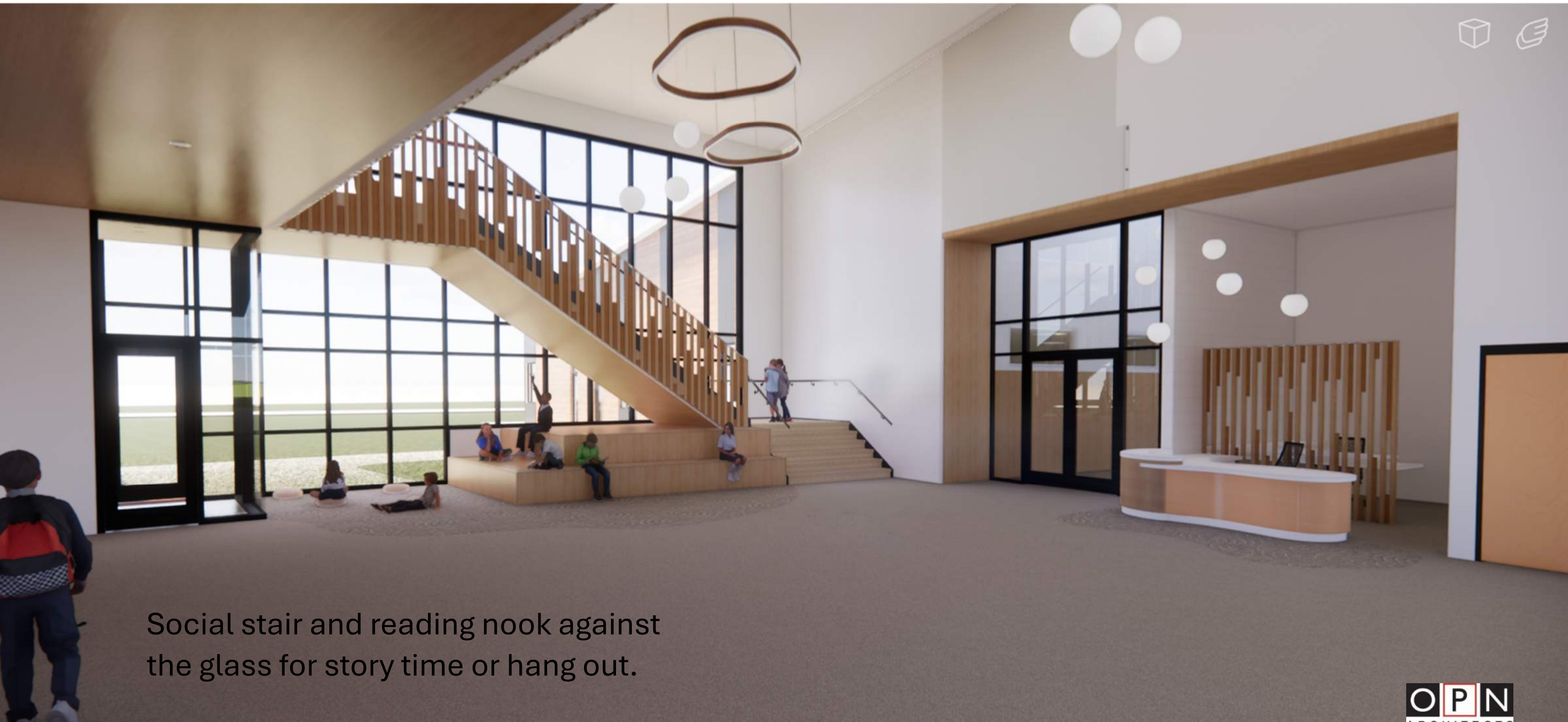
cernogroup.com

Capistrano

gallery picture may not represent selected finish options. Pendant LED fixture 59"x50" 83"x70" Suspension: Angled cable (shown), Straight cable, Collared cable This product is offered exclusively by our sales representative network. For more information...



LIBRARY & TREE HOUSE STAIR



Social stair and reading nook against the glass for story time or hang out.

LIBRARY & TREE HOUSE STAIR



LIBRARY & TREE HOUSE STAIR



LIBRARY & TREE HOUSE STAIR



Monticello Community School District

OPN
ARCHITECTS

1ST - 2ND GRADE CO-LAB & CLASSROOMS



1ST - 2ND GRADE CO-LAB & CLASSROOMS



Continuing the vertical fin aesthetic into the co-labs, and different size windows to add whimsical character to the space.

3RD - 4TH GRADE CO-LAB & CLASSROOMS



3RD - 4TH GRADE CO-LAB & CLASSROOMS



Continuing the vertical fin aesthetic into the co-labs, and different size windows to add whimsical character to the space.

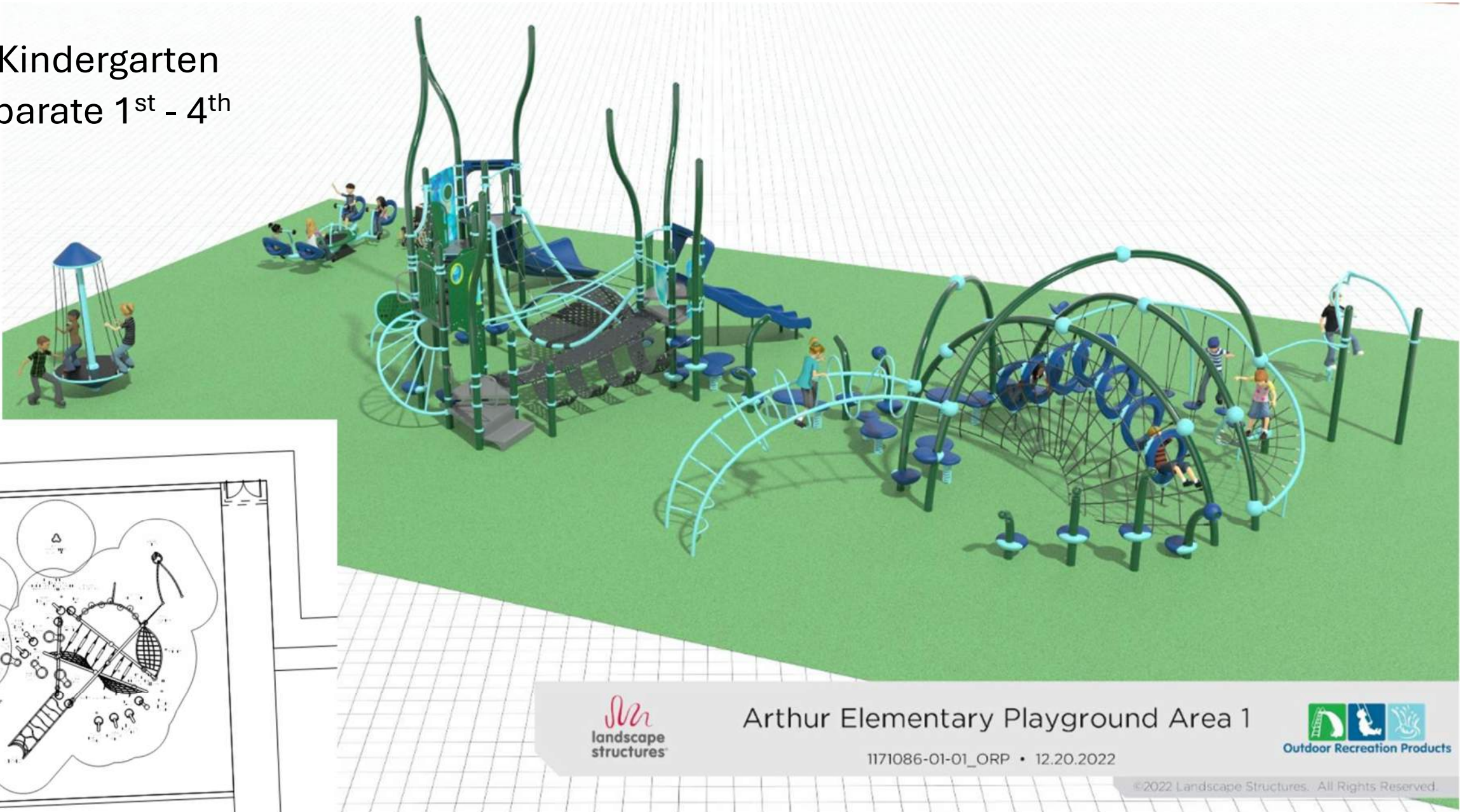


PLAYGROUND DESIGNER

PLAYGROUND DESIGNER

Outdoor Recreation Products - Landscape Structures

Planning for a Pre-K/Kindergarten playground and a separate 1st - 4th grade playground





COMMERCIAL NEW CONSTRUCTION PROGRAM

Commercial New Construction (Iowa)

Energy-efficient buildings use less energy and cost less to operate

Our Commercial New Construction (CNC) program provides free energy design assistance and financial incentives to help offset the cost of implementing energy-efficient strategies. The program is available to Iowa businesses that have new construction, additions or renovation projects not yet in the design phase.

- VFD (Variable Frequency Drive) on the chiller/compressor - controls the speed of the compressor motor, optimizing energy efficiency and performance
 - Gas boiler with aggressive temperature reset – lowers the boiler's operating temp more substantially as the outdoor temperature increases, reducing the amount of residual heat in the system and preventing overheating.
 - Displacement ventilation strategy to increase effectiveness of the classrooms and save on energy.
 - LED lighting and dimming sensors
-
- Targeting at \$44,340 annual energy savings over code baseline.



QUESTIONS

Thank You



PLANS

FIRST FLOOR PLAN



SECOND FLOOR PLAN

